

NEW!

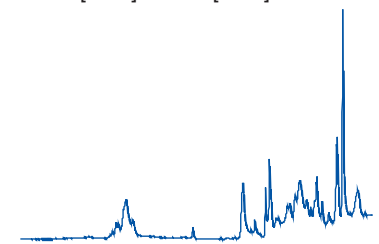
FDM ATR Plastics Kit

*Analyze plastics faster with
ATR/FTIR libraries designed for plastics analysis.*

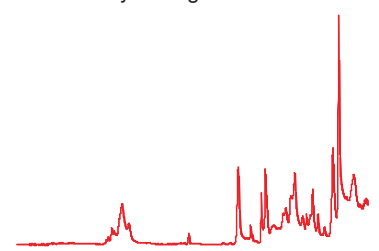
Easily ID:

- Blended Resins
- Resins with Plasticizers
- Resins with Inorganic Fillers
- Resins with Polymer Additives
- Solve simple mixtures instantly.
- Solve complex mixtures faster.
- Easy to use. Easy to understand.
- Works with most FTIR search programs.

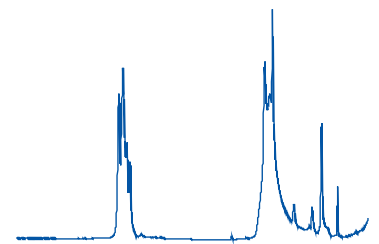
Top Search Result:
PMMA [20%] + ABS [80%]



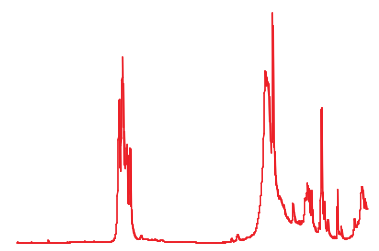
Warehouse sample labeled
"ABS & Acrylic Regrind"



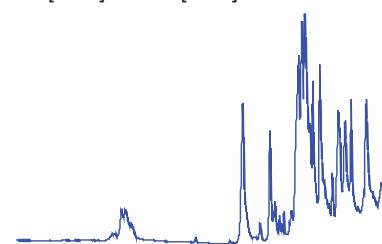
Top Search Result:
PP [55%] + CaCO₃ [45%]



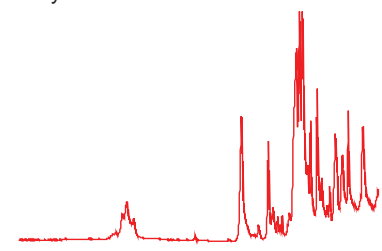
Sample labeled "Polypropylene &
Calcium carbonate"



Top Search Result:
PC [70%] + ABS [30%]



Plastic block labeled
"Polycarbonate & ABS"



**Ask for
a quote today!**



PITTCON 2016
CONFERENCE & EXPO

**Find out more
at Booth 1519.**

March 7-10 Atlanta

sales@fdmspectra.com 608-236-9145 www.fdmspectra.com

See Reverse ...

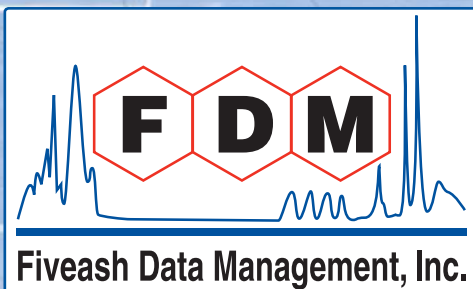
Mixture Components: the library is composed of mixture spectra calculated using neat spectra of these compounds.

Resins	Inorganic Fillers	Plasticizers	Polymer Additives
AB	Al ₂ O ₃	Adipates	ADK Stab
ABS	BaSO ₄	Azelates	Alvanox
AS	CaCO ₃	Chloroparafins	Aminox
AN	CaSO ₄	Citrates	Aranox
Acetal	Ca(OH) ₂	Dibenzoates	Chimassorb
EVA	Mg(OH) ₂	Dimerates	Cyanox, Cyasorb,
HDPE	MgO	Oleates	Cyastat, Cyanox,
LDPE	SiO ₂ , colloidal	Laurates	Cyasorb, Cyastat
N66	SiO ₂ , microcryst.	Palmitates	Flamestab
PB	Sb ₂ O ₃	Phosphates	Hostanox
PC	Talc	Phthalates	Irgastab, Irgafos, Irganox
PMMA	TiO ₂	Ricinoleates	Naugard
PVC	ZnO	Stearates	Nylostab
... more	... more	... more	Sandostab
			... more

Chemical Name Index subsets: each line is the chemical name for a mixture spectrum of two or more components.

Blended Resins	Resins & Plasticizers	Resins & Fillers	Resins & Additives
LDPE [10%] + PMMA [90%] LDPE [20%] + PMMA [80%] LDPE [30%] + PMMA [70%] LDPE [40%] + PMMA [60%] ... LDPE [10%] + PP [90%] LDPE [20%] + PP [80%] LDPE [30%] + PP [70%] LDPE [40%] + PP [60%] ... LDPE [10%] + PES [90%] LDPE [20%] + PES [80%] LDPE [30%] + PES [70%] LDPE [40%] + PES [60%] ... and many more!	PVC [10%] + Dioctyl phthalate [90%] PVC [20%] + Dioctyl phthalate [80%] PVC [30%] + Dioctyl phthalate [70%] PVC [40%] + Dioctyl phthalate [60%] ... PVC [10%] + Dibutyl phthalate [90%] PVC [20%] + Dibutyl phthalate [80%] PVC [30%] + Dibutyl phthalate [70%] PVC [40%] + Dibutyl phthalate [60%] ... PVC [10%] + Diethyl phthalate [90%] PVC [20%] + Diethyl phthalate [80%] PVC [30%] + Diethyl phthalate [70%] PVC [40%] + Diethyl phthalate [60%] ... and many more!	LDPE [10%] + CaCO ₃ [90%] LDPE [20%] + CaCO ₃ [80%] LDPE [30%] + CaCO ₃ [70%] LDPE [40%] + CaCO ₃ [60%] ... PP [10%] + BaSO ₄ [90%] PP [20%] + BaSO ₄ [80%] PP [30%] + BaSO ₄ [70%] PP [40%] + BaSO ₄ [60%] ... PS [10%] + Sb ₂ O ₃ [90%] PS [20%] + Sb ₂ O ₃ [80%] PS [30%] + Sb ₂ O ₃ [70%] PS [40%] + Sb ₂ O ₃ [60%] ... and many more!	EVA [10%] + PE-68 [90%] EVA [20%] + PE-68 [80%] EVA [30%] + PE-68 [70%] EVA [40%] + PE-68 [60%] ... HDPE [10%] + ..phosphite.. [90%] HDPE [20%] + ..phosphite.. [80%] HDPE [30%] + ..phosphite.. [70%] HDPE [40%] + ..phosphite.. [60%] ... PMMA [10%] + Flamestab [90%] PMMA [20%] + Flamestab [80%] PMMA [30%] + Flamestab [70%] PMMA [40%] + Flamestab [60%] ... and many more!

**Ask for
a quote today!**



See our poster 200-3P,

Sunday, 5:30-7:30 pm,

Room A412

sales@fdmspectra.com

608-236-9145

www.fdmspectra.com